



**Cable ID: SAMPLE**

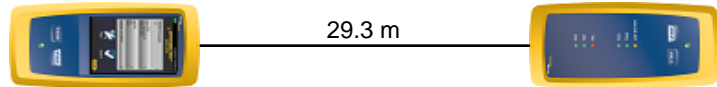
Date / Time: 2020-01-01 12:34:56 PM  
**Headroom 17.7 dB (NEXT 1,2-3,6)**  
**Test Limit: TIA Cat 6A Channel**  
 Cable Type: Cat 6A U/FTP  
 NVP: 74.0%

Operator: CJJ  
 Software Version: V6.0 Build 6  
 Limits Version: V7.0  
 Calibration Start Date:  
 Main (Module): 2018-06-03  
 Remote (Module): 2018-06-03

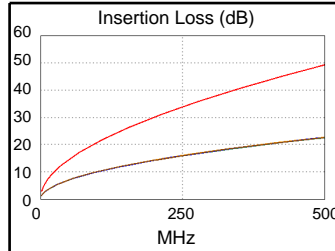
**Test Summary: PASS**

Model: DSX-5000  
 Main S/N: 18060497  
 Remote S/N: 18060417  
 Main Adapter: DSX-CHA004  
 Remote Adapter: DSX-CHA004

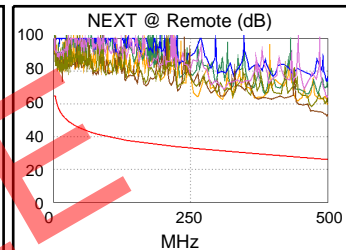
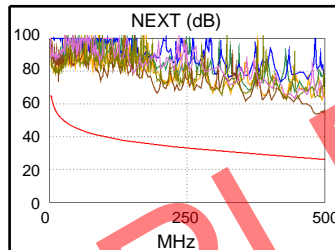
Wire Map	1	2	3	4	5	6	7	8	S
<b>PASS</b>									
(T568B)	1	2	3	4	5	6	7	8	S



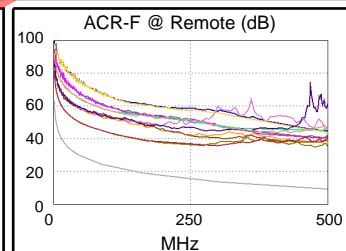
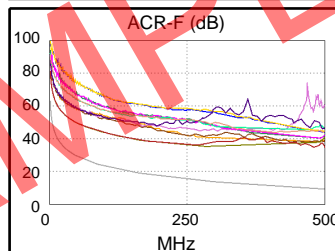
Length (m), Limit 100.0	[Pair 7,8]	29.3
Prop. Delay (ns), Limit 555	[Pair 3,6]	134
Delay Skew (ns), Limit 50	[Pair 3,6]	2
Resistance (ohms)	[Pair 3,6]	12.64
Insertion Loss Margin (dB)	[Pair 1,2]	26.6
Frequency (MHz)	[Pair 1,2]	500.0
Limit (dB)	[Pair 1,2]	49.3



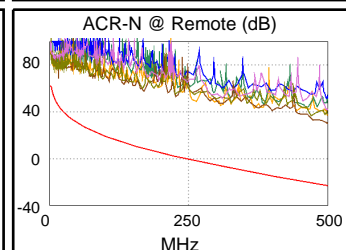
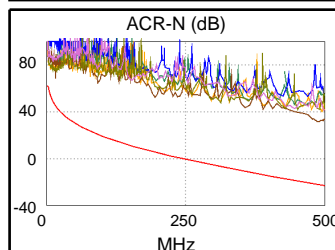
	Worst Case Margin		Worst Case Value	
<b>PASS</b>	MAIN	SR	MAIN	SR
Worst Pair	1,2-3,6	3,6-7,8	3,6-4,5	3,6-4,5
<b>NEXT (dB)</b>	17.7	18.9	26.5	26.4
Freq. (MHz)	3.3	3.6	485.0	500.0
Limit (dB)	64.5	63.7	26.5	26.1
Worst Pair	3,6	3,6	3,6	3,6
<b>PS NEXT (dB)</b>	17.4	19.3	29.1	28.3
Freq. (MHz)	3.3	4.3	485.0	500.0
Limit (dB)	62.0	60.1	23.6	23.2



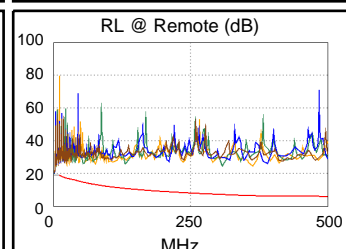
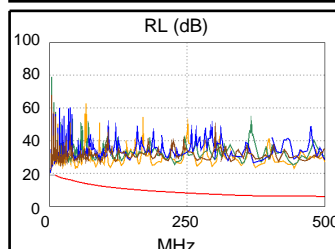
<b>PASS</b>	MAIN	SR	MAIN	SR
Worst Pair	3,6-4,5	4,5-3,6	4,5-3,6	3,6-4,5
<b>ACR-F (dB)</b>	19.8	19.8	24.9	24.7
Freq. (MHz)	171.5	171.5	479.0	479.0
Limit (dB)	18.6	18.6	9.7	9.7
Worst Pair	3,6	3,6	3,6	4,5
<b>PS ACR-F (dB)</b>	19.7	19.4	26.8	26.7
Freq. (MHz)	1.0	1.0	500.0	480.0
Limit (dB)	60.3	60.3	6.3	6.6



<b>N/A</b>	MAIN	SR	MAIN	SR
Worst Pair	1,2-3,6	3,6-7,8	3,6-4,5	3,6-4,5
<b>ACR-N (dB)</b>	19.6	20.9	52.8	53.1
Freq. (MHz)	3.1	3.6	486.0	500.0
Limit (dB)	61.1	59.8	-22.1	-23.2
Worst Pair	3,6	3,6	4,5	3,6
<b>PS ACR-N (dB)</b>	19.4	21.3	55.3	55.0
Freq. (MHz)	3.3	3.6	485.0	500.0
Limit (dB)	58.2	57.3	-24.9	-26.1



<b>PASS</b>	MAIN	SR	MAIN	SR
Worst Pair	1,2	1,2	1,2	1,2
<b>RL (dB)</b>	6.9	8.1	7.7	17.4
Freq. (MHz)	9.3	23.9	47.0	360.0
Limit (dB)	19.0	17.1	15.3	6.4



Compliant Network Standards:  
 10BASE-T      100BASE-TX      100BASE-T4  
 1000BASE-T    2.5GBASE-T      5GBASE-T  
 10GBASE-T    ATM-25            ATM-51  
 ATM-155      100VG-AnyLan    TR-4  
 TR-16 Active    TR-16 Passive